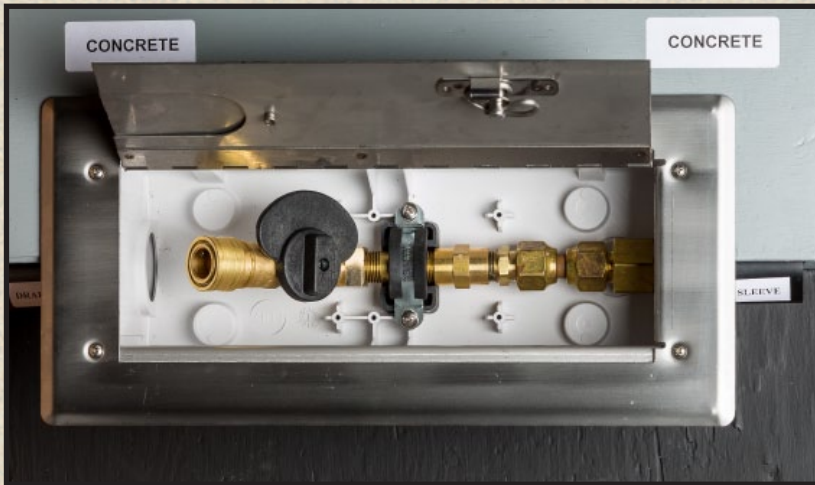




VERSATILE GAS PLUG™ CONCRETE DECK BOX



- 18 GA 316 STAINLESS STEEL DOOR & FRAME C/W GASKET
- FIRE RATED ABS ROUGH IN BOX
- SUITABLE FOR 4" OR 6" SLABS
- CONCRETE POUR COVER INCLUDED
- DRAINAGE CONNECTION
- GAS PIPE SLEEVE CONNECTION
- THERMAL VALVE SHUTS OFF GAS FLOW IN CONDITIONS OF 300°F OR MORE

Model# VGP-CD

THIS **GAS PLUG™** IS AN IDEAL MEANS OF SAFELY AND SECURELY CONNECTING YOUR NATURAL GAS OR PROPANE BARBEQUE, PATIO HEATER OR ANY INDOOR/OUTDOOR APPLIANCE DIRECTLY TO YOUR EXISTING HOME GAS SUPPLY SYSTEM. THE UNIT IS DESIGNED TO BE INSTALLED IN GROUND OR CONCRETE SLAB, ALLOWING FOR A DRAINAGE LINE TO BE CONNECTED TO THE BOX. IT IS ALSO DESIGNED TO BE ABLE TO SERVICE THAT DRAINAGE LINE SHOULD THERE BE A BLOCKAGE. THE DOOR AND FRAME IS DESIGNED FOR A FLUSH MOUNT IN HIGH TRAFFIC AREAS. THE SMALL ACCESS DOOR IN THE LARGER DOOR IS DESIGNED TO ALLOW THE APPLIANCE TO REMAIN HOOKED UP WHILE THE LARGER DOOR IS CLOSED.

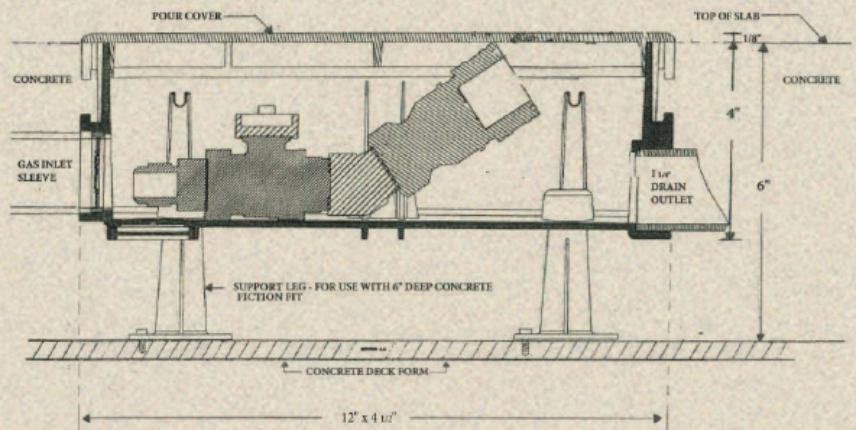
SPECIFICATIONS

Overall Size: Door - 6 1/2" x 13 3/4"
Rough-in Box - 4 1/2" x 12"

Approved for temperatures to -40 deg.

Indoor/Outdoor use

CSA Approved Components



| Model: | VGP-G0101-CD-38 | VGP-G0101-CD-2#-38 | VGP-CD-50 | VGP-CD-2#-50 | VGP-CD-75 |
|---------------------|-----------------|--------------------|-------------|--------------|-------------|
| Capacity NG: | 60,000 BTU | 60,000 BTU | 90,000 BTU | 90,000 BTU | 245,000 BTU |
| Capacity LP: | 90,000 BTU | N/A | 138,000 BTU | 138,000 BTU | 375,000 BTU |
| Outlet size: | 3/8" | 3/8" | 1/2" | 1/2" | 3/4" |
| Inlet size: | 3/4" | 3/4" | 3/4" | 3/4" | 3/4" |



3868 COMMERCIAL ST, VANCOUVER, B.C. V5N 4G2
TEL: (604) 877-1599 • FX: (604) 875-6776
EMAIL: info@bbymf.com • WEB: www.bbymf.com

Distributed by: