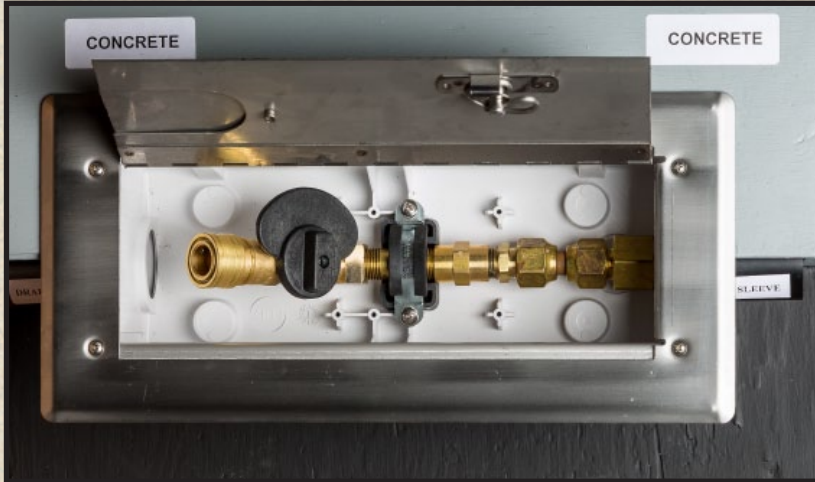




# VERSATILE GAS PLUG™ CONCRETE DECK BOX



- 18 GA 316 STAINLESS STEEL DOOR & FRAME C/W GASKET
- FIRE RATED ABS ROUGH IN BOX
- SUITABLE FOR 4" OR 6" SLABS
- CONCRETE POUR COVER INCLUDED
- DRAINAGE CONNECTION
- GAS PIPE SLEEVE CONNECTION
- THERMAL VALVE SHUTS OFF GAS FLOW IN CONDITIONS OF 300°F OR MORE

Model# VGP-CD

THIS **GAS PLUG™** IS AN IDEAL MEANS OF SAFELY AND SECURELY CONNECTING YOUR NATURAL GAS OR PROPANE BARBEQUE, PATIO HEATER OR ANY INDOOR/OUTDOOR APPLIANCE DIRECTLY TO YOUR EXISTING HOME GAS SUPPLY SYSTEM. THE UNIT IS DESIGNED TO BE INSTALLED IN GROUND OR CONCRETE SLAB, ALLOWING FOR A DRAINAGE LINE TO BE CONNECTED TO THE BOX. IT IS ALSO DESIGNED TO BE ABLE TO SERVICE THAT DRAINAGE LINE SHOULD THERE BE A BLOCKAGE. THE DOOR AND FRAME IS DESIGNED FOR A FLUSH MOUNT IN HIGH TRAFFIC AREAS. THE SMALL ACCESS DOOR IN THE LARGER DOOR IS DESIGNED TO ALLOW THE APPLIANCE TO REMAIN HOOKED UP WHILE THE LARGER DOOR IS CLOSED.

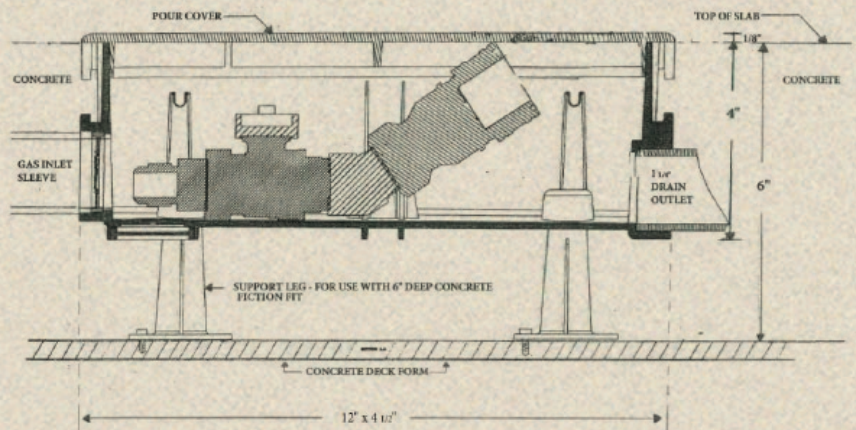
## SPECIFICATIONS

**Overall Size:** Door - 6 1/2" x 13 3/4"  
Rough-in Box - 4 1/2" x 12"

Approved for temperatures to -40 deg.

Indoor/Outdoor use

CSA Approved Components



Model:	VGP-G0101-CD-38	VGP-G0101-CD-2#-38	VGP-CD-50	VGP-CD-2#-50	VGP-CD-75
<b>Capacity NG:</b>	60,000 BTU	60,000 BTU	90,000 BTU	83,000 BTU	245,000 BTU
<b>Capacity LP:</b>	90,000 BTU	90,000 BTU	138,000 BTU	125,000 BTU	375,000 BTU
<b>Outlet size:</b>	3/8"	3/8"	1/2"	1/2"	3/4"
<b>Inlet size:</b>	3/4"	3/4"	3/4"	1/2"	3/4"



MANUFACTURING LTD.

2190-580 NICOLA AVE, PORT COQUITLAM, B.C., V3B 0P2

TEL: (604) 877-1599 • FAX: (604) 875-6776

EMAIL: info@bbymfg.com • WEB: www.bbymfg.com

Distributed by: