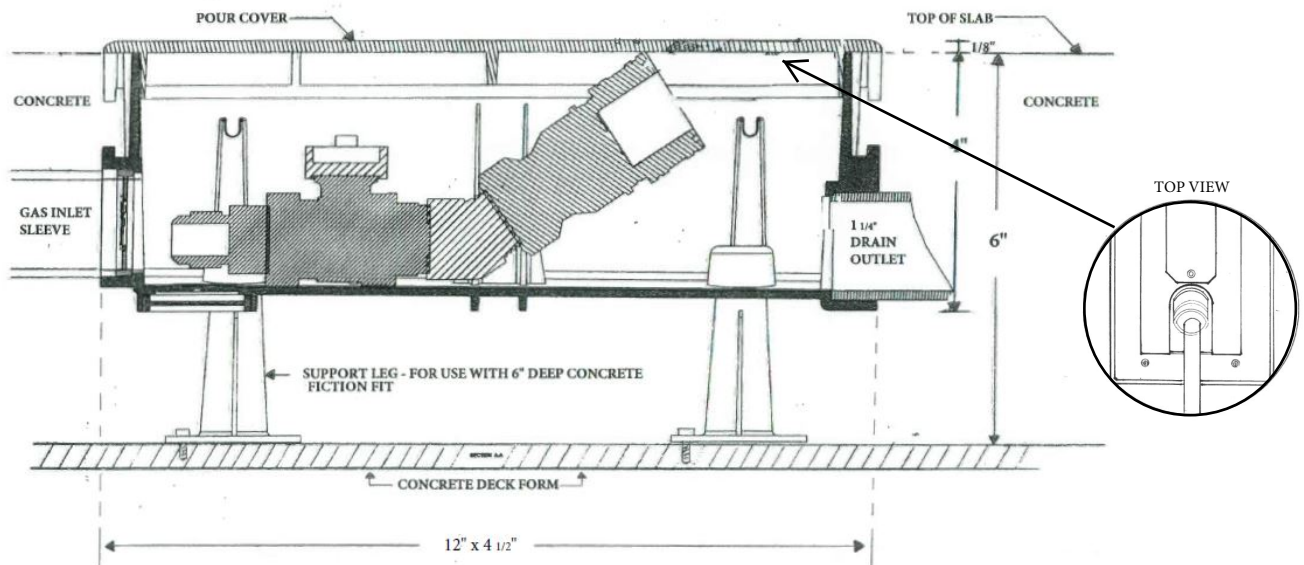




VERSATILE GAS PLUG™

C.S.A.
approved
components

CONCRETE DECK BOX INSTALLATION INSTRUCTIONS



1. This device shall be installed in accordance with local codes or, in the absence of local codes, in accordance with the National Fuel Gas Code ANSI Z223.1/NFPA54, or the Natural Gas & Propane Installation Code, CSA B149.1, as applicable.
2. Test all piping joints inside the gas outlet box as per B149.1 or B149.2
3. This optional ABS enclosure is designed to be able to install a Gas Plug™ connection in an in ground or concrete slab type of installation. All components are corrosion resistant, and serviceable in case of flooding.
4. Secure the box assembly to prevent floating during concrete pour. For slab mount, screw or nail the assembly to the concrete form. For on-grade applications, drive stakes or rebar next to the box and secure with wire. Make sure the stakes are well below the screening line of the top of the slab.
5. Connect the drain outlet (lowest connection) at the base of the box to either a drain location or an approved drainage gravel area, or other location approved by local plumbing inspection, using a 1 1/4" ABS piping.
6. Install 3/4" gas piping, through a 1 1/4" piping sleeve to the 1 1/4" ABS outlet on the box.
7. Install the VGP assembly onto the 3/4" inlet piping and test before securing the assembly into the rough in box.
8. Install the VGP assembly into the rough in box using the cushion clamps and screws provided, being careful to note the outlet location. This assembly should be installed so that the outlet will be able to clear the bottom of the door when the nipple is plugged into the disconnect coupling. See above picture.
9. Air test the complete piping system according to local codes before installing the concrete cover.
10. Install the concrete cover with the screws provided.
11. Advise concrete contractor that the level of the concrete should **"not go to the top of the cover but the top of the box itself"**.
12. After the concrete is set, remove the cover and discard. Install the stainless steel door and frame with additional screws provided.

Model #	VGP-G0101-CD-38	VGP-G0101-CD-2#-38	VGP-CD-50	VGP-CD-2#-50	VGP-CD-75	
Capacity	NG	60,000 BTU	60,000 BTU	90,000 BTU	83,000 BTU	245,000 BTU
	LP	90,000 BTU	90,000 BTU	138,000 BTU	125,000 BTU	375,000 BTU
Outlet Size	3/8"	3/8"	1/2"	1/2"	3/4"	
Inlet Size	3/4"	3/4"	3/4"	1/2"	3/4"	

VGP-CD-0317

BURNABY MANUFACTURING LTD.

2190-580 NICOLA AVE, PORT COQUITLAM, B.C., V3B 0P2 TEL: (604) 877-1599 • FAX: (604) 875-6776

EMAIL: info@bbymf.com • WEB www.bbymf.com