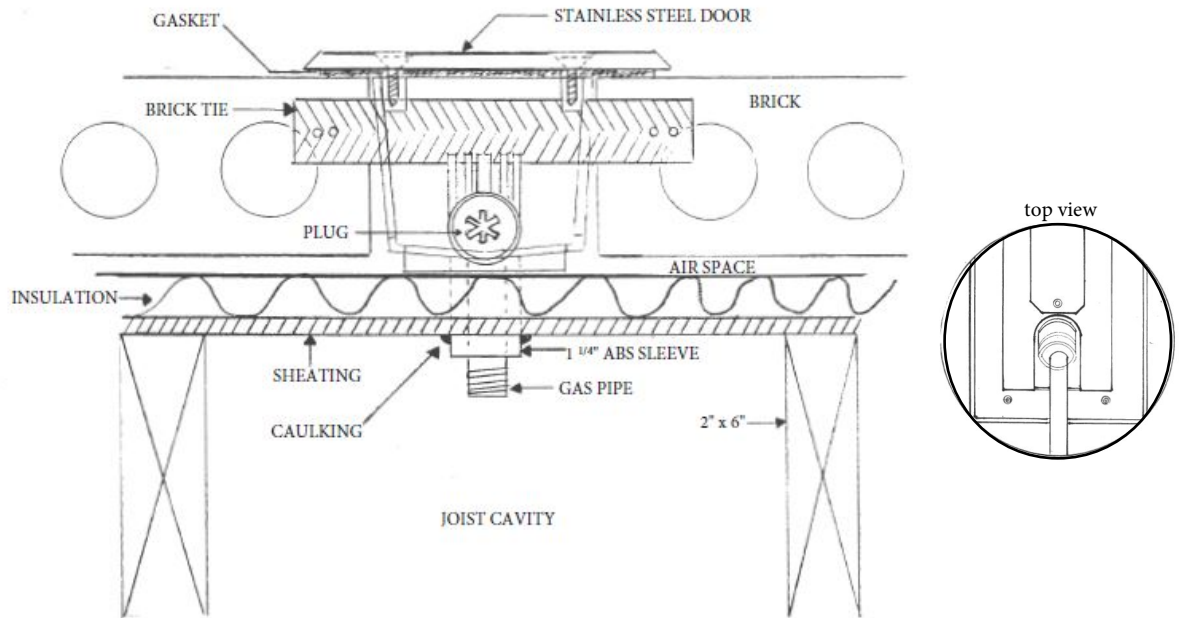




VERSATILE GAS PLUG™

C.S.A.
approved
components

EXTERIOR INSTALLATION INSTRUCTIONS



1. This device shall be installed in accordance with local codes or, in the absence of local codes, in accordance with the National Fuel Gas Code ANSI Z223.1/NFPA54, or the Natural Gas & Propane Installation Code, CSA B149.1, as applicable.
2. Test all piping joints inside the gas outlet box as per B149.1 or B149.2
3. This optional ABS enclosure is designed to be able to install a Gas Plug™ connection in exterior walls, such as brick and surfaces that require the gas supply piping to enter the enclosure from the rear. It comes complete with brick ties for use in those applications. It also comes with three plugs for use in the top inlet, drain outlet and rear sleeve if required.
4. Depending on the surface finish, but in the case of brick, install an ABS sleeve between the rear of the box to a location inside the wall cavity so the supply piping can be installed inside this sleeve and can be sealed afterwards. It is recommended to seal both areas in the rough in box where the gas line enters, and on the inside of the wall cavity. Refer to building envelope regulation for any further sealing requirements
5. You will need to coordinate the installation of the rough in box with the brick layer, so as to be able to put the hole through the sheathing for the ABS sleeve (gas line sleeve), or make sure the brick layer understands he needs to put a hole in the sheathing before finishing the installation of the rough in box.
6. Once the rough in box is installed, proceed to install the Gas Plug assembly and pipe to the meter or main gas line. Note - keep the assembly positioned to allow the connection of the nipple into the coupling - see "top view" picture above
7. Pressure test all piping including the joints in the Gas Plug rough in box for tightness
Note: Make sure that the regulators in the 2 PSIG outlets are not exposed to more than 2 PSIG by using the shut off valve to isolate it.
8. If all joints are tight, install the rough in box cover. This will keep debris out of the box until the surface has been completed
9. Remove cover and discard. Install the stainless steel door and frame.
10. Instruct end user on the operation, never leave the male plug in the coupling without being hooked up to an appliance.

Model #	VGP-G0101-EXT-38	VGP-G0101-EXT-2#-38	VGP-EXT-50	VGP-EXT-2#-50	VGP-EXT-75	
Capacity	NG	60,000 BTU	60,000 BTU	90,000 BTU	83,000 BTU	245,000 BTU
	LP	90,000 BTU	90,000 BTU	138,000 BTU	125,000 BTU	375,000 BTU
Outlet Size	3/8"	3/8"	1/2"	1/2"	3/4"	
Inlet Size	1/2"	1/2"	1/2"	1/2"	3/4"	

VGP-EXT-0317

BURNABY MANUFACTURING LTD.

2190-580 NICOLA AVE, PORT COQUITLAM, B.C., V3B 0P2 TEL: (604) 877-1599 • FAX: (604) 875-6776

EMAIL: info@bbymfg.com • WEB www.bbymfg.com